



京都大学経営管理大学院
Graduate School of Management, Kyoto University

Online Briefing for the International MBA Programs

International Business Administration Program(i-BA)
International Project Management Program(i-PM)

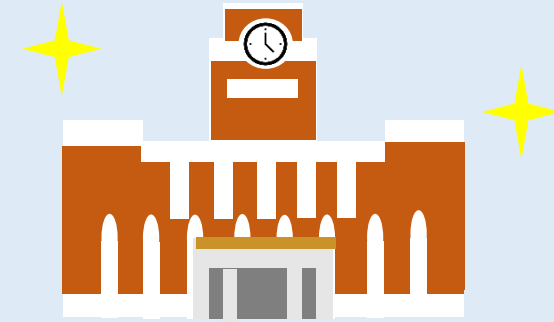
Introduction:
Graduate School of Management
Kyoto University

GSM Fast Facts

2006

Founded

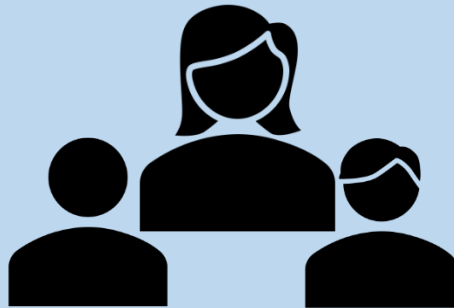
Graduate School of Management, Kyoto University was established in April 2006 with the aim of fostering advanced management human resources through fusion of humanities and science. Our aim is to provide "a bridge between advanced management research and highly specialized practice."



Faculty

118

Including full-time, part-time, adjunct and visiting professors



Number of Students per year

100

Per year

MBA

7

Per year

Ph.D.

Students with Work Experience

Without

26%



With

74%

45%

Female



Student Background

47 %

International Students



53 %

Domestic Students

Events

about
1,000
Per year



Seminars,
Special lectures,
Research
conferences
and Symposia
etc.



Academic Exchange Agreements

40

Schools



- ▣ Student exchanges
- ▣ Dual Degree Program (NTU/Hamburg U.)
- ▣ Kyoto-Cornell International Collaborative Degree Opportunity

Career

Financial/Consulting

42 %



Service (Healthcare,
Ad, Law firm,
Hotel/Resort, etc.)

13 %

Manufacturing

18 %



Education

9 %



IT

4 %

Retail

2 %



Others

7 %

Family
business/Entrepreneur

5 %



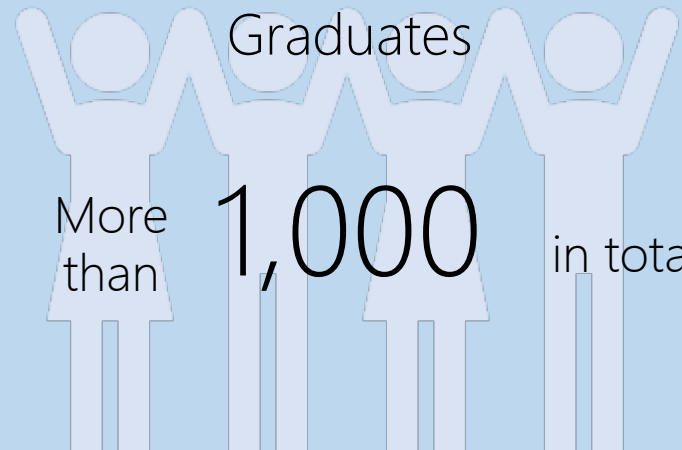
From the survey data from Graduates of 2019

Graduates

More
than

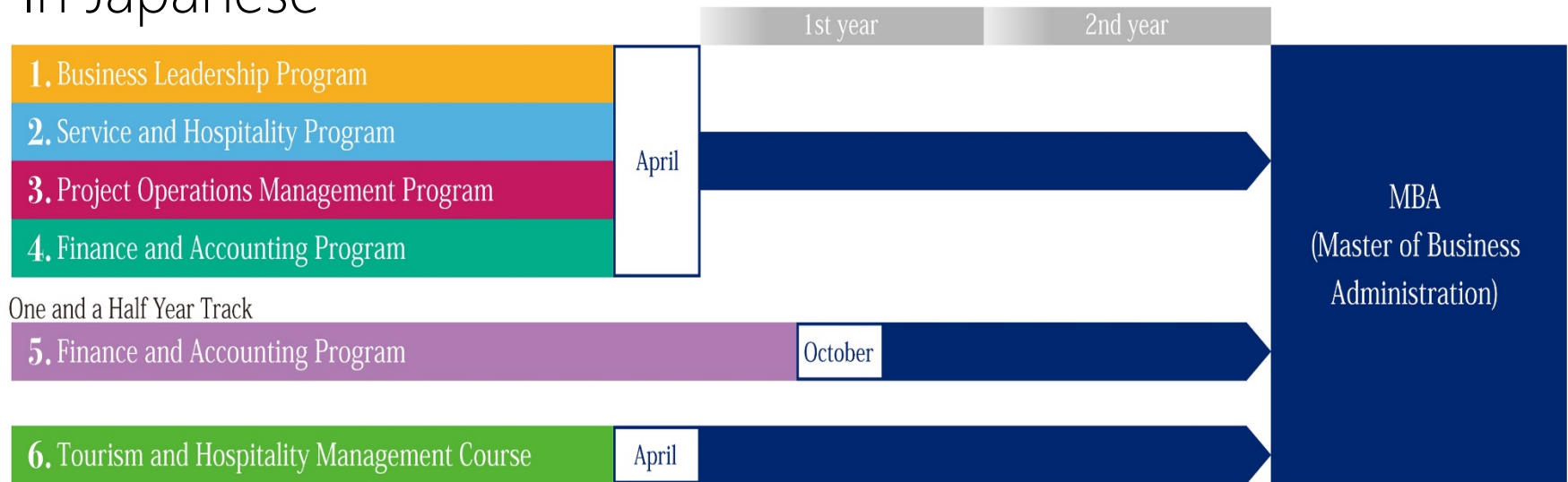
1,000

in total

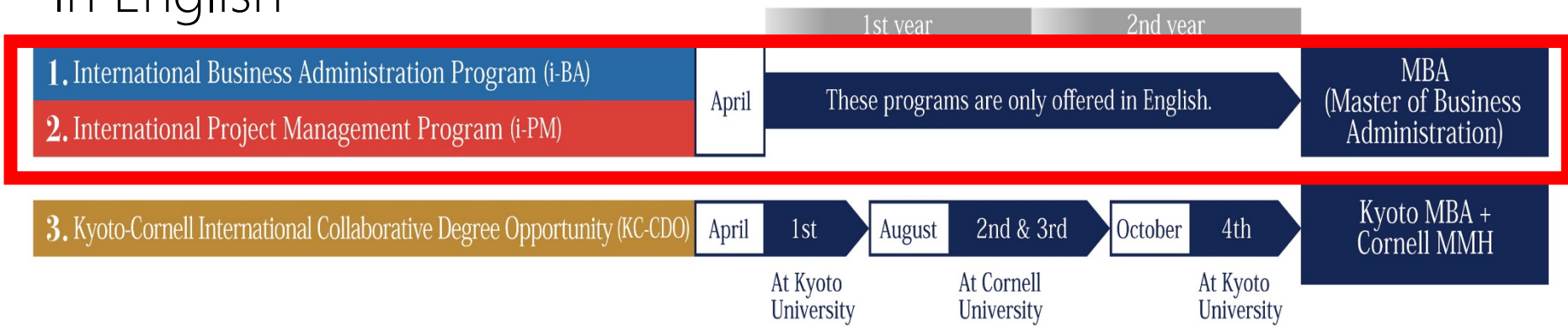


MBA Programs at Kyoto University

In Japanese



In English



Application for Admission Graduate School of Management Kyoto University

Admission Policy

▣ Our mission and policies expect that eligible candidates possess the following characteristics.

(1) Individuals who have a **strong will** to work on the complex issues that current management is facing with theoretically, practically and ethically.

(2) Individuals **who work hard and encourage each other** in the classes of GSM. They should possess intellectual curiosity and social role consciousness.

(3) Individuals **who have basic knowledge in management science** and broad knowledge in general and can apply knowledge and skills to the real setting.

Application Details for Admission 2022

□ Admission Information

<https://www.gsm.kyoto-u.ac.jp/en/admissions/infomation/international/>

□ Admission Guidelines

<https://www.gsm.kyoto-u.ac.jp/en/admissions/guidelines/international/>

For application, you will need to submit:

- Academic record
 - Diploma
 - Personal essays
 - Test results; TOEFL iBT or IELTS, GMAT or GRE (i-BA only)
 - Letters of recommendation
-
- Please prepare your test scores.
 - Desirable Scores: TOEFL iBT 79-80 or IELTS 6.0 or more
 - Special treatment for 2022: We also accept IELTS Indicator, TOEFL iBT Home Edition, and TOEFL ITP Plus for China, or other alternative scores (TOEIC etc.)

Application Period for Admission 2022

August 17 - 24, 2021: Preliminary Eligibility Screening
(*not for all applicants)

August 23 – September 17, 2021: Web application and Fee Payment Due

Submission Deadline: 5pm September 17, 2021 (JST)

Announcement of Application Result: 3pm October 27th, 2021

Further information can be found at

<https://www.gsm.kyoto-u.ac.jp/en/admissions/guidelines/international/>

Scholarship

□ MEXT (Ministry of Education, Culture, Sports, Science and Technology) Scholarship

If you are offered the scholarship already, please contact us before applying. **Please contact AFTER passing the first screening with the certificate.**

- Details <https://www.mext.go.jp/en/>

□ ADB-JSP (Asian Development Bank – Japan Scholarship) Scholarship

Please check your eligibility from <https://www.gsm.kyoto-u.ac.jp/en/wp-content/uploads/ADB-JSP-Application-guideline-for-2022.pdf>

***i-BA applicants CANNOT apply for this scholarship.**

- Submit application forms downloadable from ADB-JSP website

<https://www.adb.org/work-with-us/careers/japan-scholarship-program/procedures-applying>

FAQ

Frequently Asked Questions (FAQ)

□ What is the minimum score required for TOEFL/IELTS/GMAT/GRE?

There is no minimum score required for application.

However, we encourage you to apply with the scores as follows;

- TOEFL iBT 79 or more *My Best Score cannot be used for the application
- IELTS 6.0 or more
- There is no minimum/recommended scores for GMAT and GRE.

□ What is the acceptance rate of the program?

- 33 passed / 114 applicants (2021)
- 27 passed / 90 applicants (2020)
- 25 passed / 91 applicants (2019)

Frequently Asked Questions (FAQ) Cont.

- I am interested in both International MBA Program (i-BA/i-PM) and Kyoto-Cornell International Collaborative Degree Opportunity. Can I apply for both?
 - No, you cannot. You have to choose and apply to one only.

- What kind of career path do the graduates pursue after graduation?
 - Financial Institutions, Consulting Companies, Manufacturing industry, Service industry, IT firms, Accounting firms, Government, etc.
 - For all MBA Programs, see: <https://www.gsm.kyoto-u.ac.jp/admissions/career/>
(only in Japanese)

- Do I have to contact a professor before applying?
 - No. You do not need to contact any professors before applying. We will assign a supervisor to each student after enrollment.

Academic Affairs:
Graduate School of Management
Kyoto University

Mission and Basic Approach of Graduate School of Management

□ Mission

The Graduate School of Management **develops an educational system that draws upon the latest research in management, as well as advanced and specialized business practices.** Our school aims to contribute to the diverse yet harmonious development of society through **nurturing originality and decision-making capabilities in professionals so that they can become leaders** in a wide area of fields.

□ Basic Approach

The following are the three principal approaches to realize this objective.

1. While following the tradition of the **Kyoto University that places an importance on the autonomous and independent spirit** and critical discussions, the school will promote advanced research and develop an educational system that encompasses highly specialized business practices, by creating a research and educational environment in cooperation with industries and government.
2. The school will **accept individuals with diverse backgrounds** and will produce highly specialized professionals in various fields by utilizing our educational system.
3. As a university in the global society, the school **will fulfill the role of becoming a base for original research and education.**

Curriculum Policy

The policy covers the curriculum of the professional program, the method of education/learning, and the evaluation of study result.

Firstly, the curriculum is organized to master broad foundational management knowledge as well as specialized knowledge and practical skills by learning from **the basic subjects** through **the specialized and business practice subjects up to the advanced subjects**.

Secondly, the method of education/learning is mainly the lecture-style classes at the stage of basic knowledge. However, the method changes to seminar-style classes at the stage of practical skills. To enable students to create their study plan easily, we provide a graphic curriculum tree. In addition, we guide students to achieve practical applied skills through academic seminars and/or symposiums.

Thirdly, the evaluation of students and their achievement is based on a relative performance evaluation method. However, we use other methods as well. For example, a descriptive examination is used to evaluate students' understanding of basic knowledge. We measure students' achievement of applied learning skills partly by their participation in class discussions. Furthermore, practical skills are evaluated through their actions in workshops and/or projects. The details for each class are explained in syllabi. GSM provides various educational programs that correspond to specific disciplinary/professional areas. Each program sets clear study goal(s) and a curriculum specifically designed for it. As management/business challenges have become global in nature, we require our students to take above a certain number of classes taught in English to master highly specialized knowledge.

The curricula of our professional programs reflect the latest developments in management theory and methods. GSM offers curricula that improve students' practical skills, that deepen student understanding and sense of responsibility of the importance of business, and that teach social aspects of business.

Diploma Policy

The Graduate School of Management, **Kyoto University grants the MBA** (Master of Business Administration) **to students who have gained the knowledge and skills below.** However, **the students must meet the requirements of GSM regarding term of study, accepted classes, and the number of credits.** They include those who have:

- (1) Mastered comprehensive basic knowledge of management as advanced professionals.
- (2) Obtained a high level of knowledge as professionals.
- (3) Developed theoretical thinking and practical skills to apply professional knowledge to business.
- (4) Shown a high ethics standard and strong sense of responsibility as professionals.

Curriculum, Course Concepts

□ Study Year Regulation

The Graduate School of Management **has a study year regulation which allows students to only be in the same year of study for 2 years.** A student may not take more than a total of 3 years of leave.

□ Completion Requirement

In order to graduate, students must attend for at least 2 years (not counting any leaves from study) **and complete a total of 42 credits.** The list of subjects and credits are as follows.

- ◆ Basic Subjects 16 or more credits
- ◆ Specialized Subjects 14 or more credits
(of which 10 or more credits must be from subjects specified by the program)
- ◆ Business Practice Subjects 8 or more credits
(of which 6 or more credits must be from subjects specified by the program)
- ◆ Advanced Subjects 2 subjects, 4 credits
(Workshops I and II must be completed)

□ Requirements to Advanced to the Second Year

A student must complete both (1) 10 or more credits in 5 or more Basic Subjects and (2) have acquired a total of at least 16 credits in both Basic and Specialized Subjects.

Important Notes Regarding the Curriculum and Course

▣ Curriculum and Course Restrictions

There is a limit to the number of classes a student can take per semester (up to 18 credits). This maximum credit limit includes classes instructed in Japanese or classes offered by other departments.

▣ Taking Subjects Instructed in Japanese

If a student has Japanese proficiency equivalent to level N1 of the Japanese Language Proficiency Test, he/she may register for classes instructed in Japanese at the graduate school. However, the number of credits which may be applied for course completion is 4 credits for specialized subjects and 2 credits for business practice subjects.

▣ Registering for Subjects in Other Departments

It is possible for students to register for classes offered in other departments. students may apply to have the credits count as specialized subject credits (as subjects not specified by the program) towards program completion. However, the maximum number of such credits is 4 credits.

Important Notes Regarding the Curriculum and Course

□ Point System

The Graduate School of Management frequently invites researchers and professionals from within and outside the university to give special lectures or seminars, and strongly encourages its students to attend. Furthermore (although not always counting towards receiving credits), the school encourages students to participate in short or long term internships domestically and abroad, and lectures and such in order to deepen one's knowledge. Students **must acquire a minimum total of 20 points by attending or presenting at special lectures, related research meetings, association meetings, doing studies abroad, internships, etc.** during their two year study term. This is a requirement to receiving the credits for WSII in the second year.

□ Supervisors

In order to address the specific curriculum needs of each student based on their individual knowledge, abilities and future aspirations, each student is assigned a supervisor who will assist the student in their studies in International Program Cluster. The faculty members will arrange the supervisor to the students after they enrolled.

□ Double Degree Program Opportunity

- (1) National Taiwan University
- (2) Hamburg University

Introduction: International MBA Programs

International Business Administration(i-BA)
International Project Management (i-PM)

International Business Administration Program (i-BA) International Project Management Program (i-PM)

1. The courses provided taught in English

- (1) International Business Administration Program (i-BA)
- (2) International Project Management Program (i-PM)

2. Study Period

April 2022 ~ March 2024 (Two years)

3. Enrollment Capacity

10 Students for i-BA / 10 Students for i-PM



4. Academic Degrees

MBA (Master of Business Administration at Kyoto University-Graduate School of Management)

5. Tuition Fee and Admission Fee

538,000 Yen / 2 semesters (One year)

282,000 Yen (All students need to pay once enrollment)

What is the difference between i-BA and i-PM?

□ International Business Administration Program (i-BA)

The International Business Administration Program is a course of study that leads **to a general management degree** while helping you develop your vision and the skills to achieve it. Students get the business knowledge and specialized skills to expand career choices. This program seeks to develop **expertise in business leadership, but also service & hospitality management, finance and accounting.**

□ International Project Management Program (i-PM)

The International Project Management Program offers an educational curriculum in management necessary to successfully complete projects that have special aims, diverse constraints, and uncertainties for the purpose of nurturing highly advanced professionals who will take active part in these areas of management.

□ In principle, once you apply to either the i-BA or i-PM program, it is not allowed to change your program.

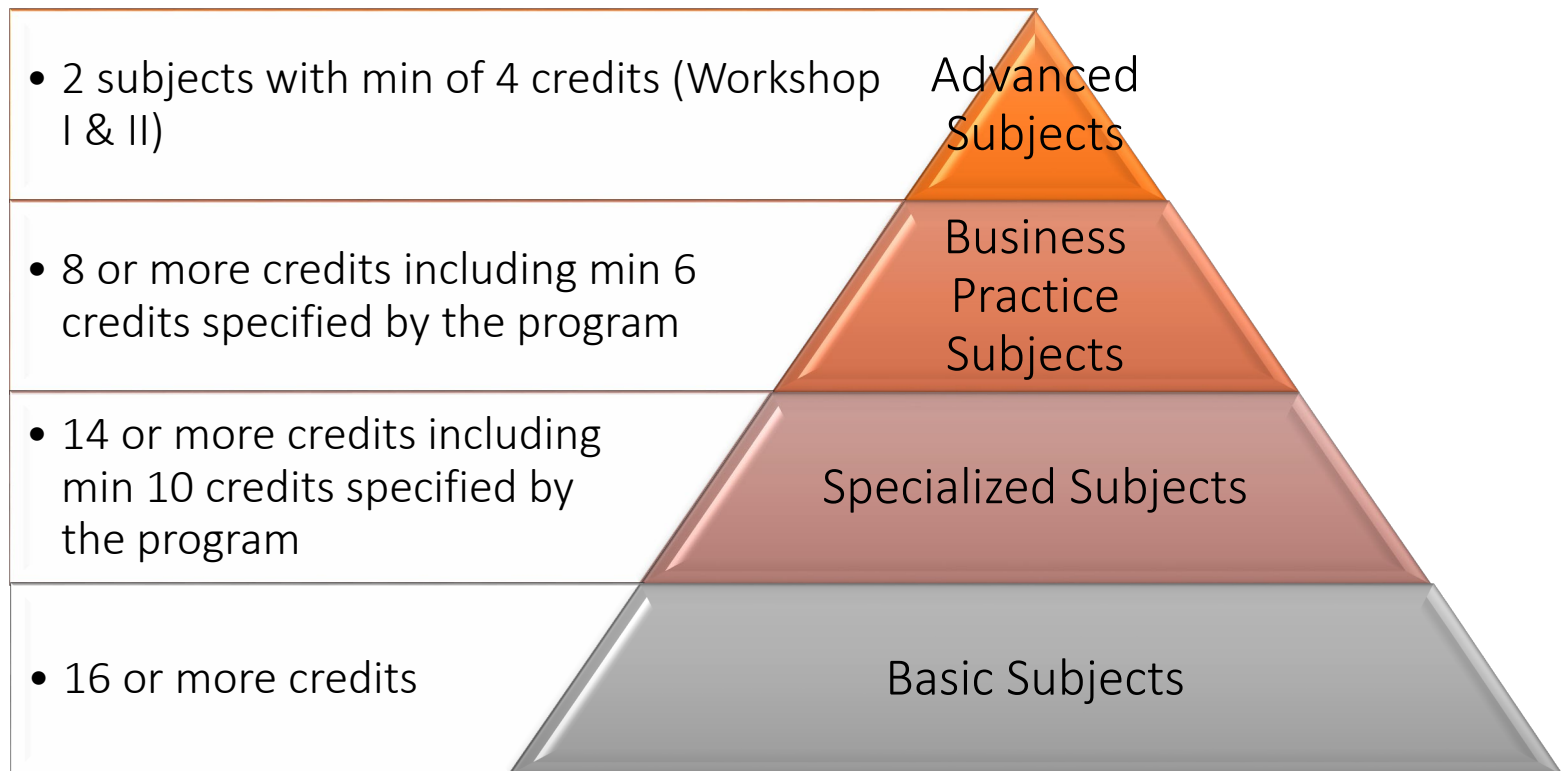
Program Completion Requirement

□ Study Term

- 2 years, consisting of 4 semesters
- 1st year: 1st and 2nd semesters; 2nd Year: 3rd and 4th semesters

□ The number of credits to complete the program

- **42 credits**



Workshop Topics Example from 2020AY

□ i-BA

- Ownership Type and Shareholder Dissent: Evidence from Singapore
- Effect of Credit Scoring on Loan Volume & Loan Default Rate: The Case of Singapore

□ i-PM

- Investigation of current Bridge Management Systems in Turkey, and providing a prototype system with further improvement
- Selection of Renewable Energy PP Investment Project in Indonesia Using AHP Approach
- India State-wise Optimal energy mix from inclusivity and sustainability perspectives

Faculty Members



Faculty Members



Keiichi Toda
(Professor/Dean of GSM)



Asli M. Colpan
(Professor/
Director of i-BA)



Takashi Yamamoto
(Professor/
Director of i-PM)

Connect with Us!

□ Contact Us

<https://www.ih.gsm.kyoto-u.ac.jp/en/contact/>

□ Official Website

GSM <https://www.gsm.kyoto-u.ac.jp/en>

Intl MBA Programs <https://www.gsm.kyoto-u.ac.jp/en/education/mba/international-mba-programs/>

□ Facebook Page

<https://www.facebook.com/gsm.kyoto.u/>



京都大学経営管理大学院
Graduate School of Management, Kyoto University